

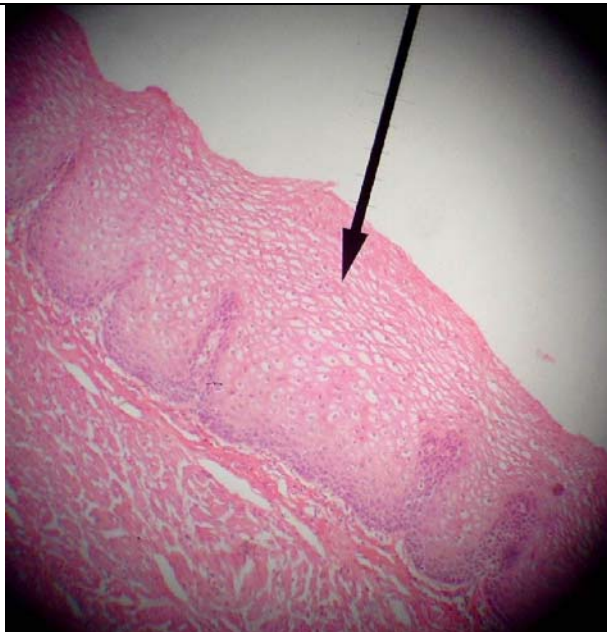
Referral Exercise : Drawing specimens

An essential skill in microscopy is the ability to be able to draw diagrams of what you see in the microscope that enhance the image you see so that you show important features clearly. The drawing you produce should not be like a photograph. It needs to be a realistic representation of what you see, but at the same time only contain the important features to demonstrate what you wish to show.

Make drawings representing the two microscope images below, labelling the drawing to describe the important features **that you can see**.



Euglena 40x objective



Epithelium 40x objective